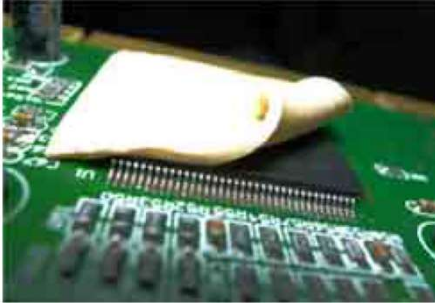


Thermal Interface Material



RS300



- Super soft material
- Very low bleeding
- Naturally tacky

Properties	Unit	RS300
Color		Yellow
Thermal Properties		
Thermal Conductivity	W/mK	3.3
Thermal Impedance	°C cm ² /W (°C in ² /W)	3.8 (0.59) at 1mm; 30psi
Electrical Properties		
Dielectric Strength	kV/mm	6.2
Volume Resistivity	MΩm	10 ¹²
Mechanical Properties		
Hardness	Shore 00	33
Tensile Strength	MPa (psi)	0.08 (12)
Elongation	%	158
Physical Properties		
Application Temperature	°C (°F)	-40 to +180 (-40 to +356)
Density	g/cm ³	2.8
Flame rating	UL-94	V-2
Possible Thickness	mm (inch)	0.3 to 5.5 (0.012 to 0.216)

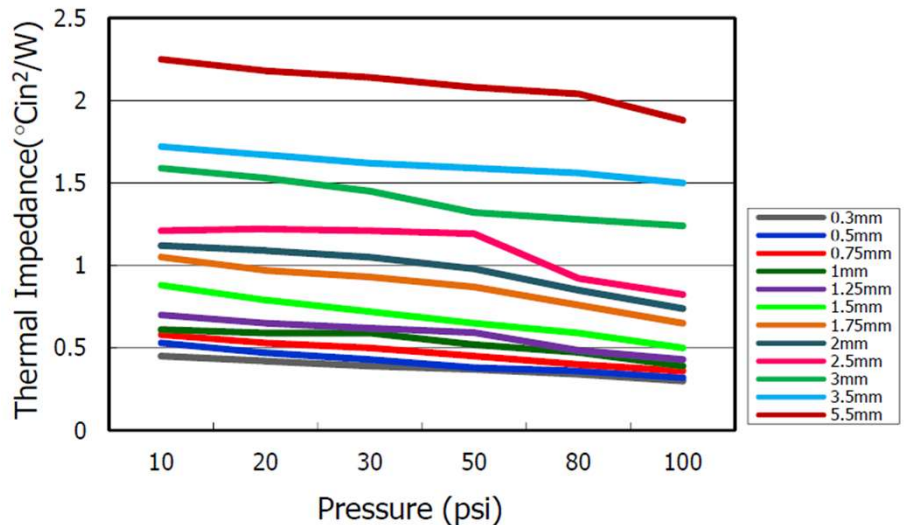
Applications

- Smartphone
- Tablet
- Notebook
- Projector
- Storage devices
- Telecommunications
- Automotive electronics

Options

- Wide range of thicknesses available

Thermal impedance vs. Pressure



The data provide engineering guidance, performance in actual applications should be established through testing.